



**PROJECT**  
**CABINDA PORT – BREAKWATER AND QUAY**

**CATEGORY**  
**HYDRAULICS & MARITIME WORKS**

**CLIENT**  
**CONSORTIUM MEECA – MOTA-ENGIL ENGENHARIA E CONSTRUÇÃO AFRICA - SUCURSAL ANGOLA / SETH - SOCIEDADE DE EMPREITADAS E TRABALHOS HIDRÁULICOS, S.A.**

**LOCATION**  
**CABINDA, ANGOLA**

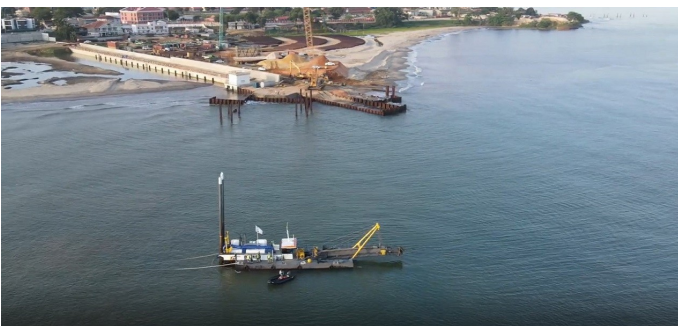
**PROJECT YEAR**  
**2016 - 2018**

**MAIN CHARACTERISTICS**

The EPC - Empresa Portuária de Cabinda intended to build a breakwater to ensure the operational conditions of the floating docks that are used in the reception and shipment of goods in the Cabinda Port, in Angola. The solution, alternative to the breakwater and quay structure provided in the original design, consisted in the replacement of the reinforced concrete platform by an embankment created with sands obtained by dredging the access channel to the port. The maritime works of this project were as follows: Breakwater, with 700 m in length; Quay with depth of -5.00 m (CD) in about 180 m length and depth of -9.00 m (CD) in about 350 m, and associated facilities; Ramp for roll on - roll off vessels, with depth of -9.00 m (CD); Embankment with 180.000 m3, contained by the curtains of sheet piles that constitute the breakwater and the mooring front; Paving and drainage of the embankment; Support buildings; Technical networks.

**PROVIDED SERVICES**

Numerical Modelling Studies; Detailed Design; Technical Assistance.



**VILA REAL**

AV. DA EUROPA, EDF.  
ENCOSTA DO RIO, N.º 10  
5000 - 557 VILA REAL |  
PORTUGAL  
+351 259 309 200  
(CHAMADA PARA A  
REDE FIXA NACIONAL)  
vilareal@nrv-norvia.com

**LISBON**

RUA JOÃO SARAIVA Nº  
32 1700 - 250 LISBOA |  
PORTUGAL  
+351 219 108 930  
(CHAMADA PARA A  
REDE FIXA NACIONAL)  
lisboa@nrv-norvia.com

**FUNCHAL**

RUA DR. PITA EDIFÍCIO  
STADIUM, BLOCO 1 A1  
R/C 9000-160 FUNCHAL  
MADEIRA | PORTUGAL  
+351 291 700 160  
(CHAMADA PARA A  
REDE FIXA NACIONAL)  
madeira@nrv-norvia.com

**PRAIA**

AV. DE SANTIAGO, EDF.  
ORDEM DOS  
ENGENHEIROS, 1ºDIR  
PALMAREJO, PRAIA |  
CABO VERDE  
+238 262 44 60  
(CHAMADA PARA A  
REDE FIXA DE CABO  
VERDE)  
caboverde@nrv-  
norvia.com

**LUANDA**

RUA DAMIÃO DE GÓIS,  
N.º 16 - 18 BAIRRO DE  
ALVALADE LUANDA |  
ANGOLA  
+244 938 198 440  
(CHAMADA PARA A  
REDE FIXA DE ANGOLA)  
nrvao@nrv-norvia.com

**MAPUTO**

CENTRO ESCRITÓRIOS  
MILLENIUM PARK  
BUILDING, AVENIDA  
VLADIMIR LENINE 174, 1º  
ANDAR - CIDADE DE  
MAPUTO | MOÇAMBIQUE  
+258 21 305 397  
(CHAMADA PARA A  
REDE FIXA DE  
MOÇAMBIQUE)  
mz@nrv-norvia.com

**DAKAR**

VDN - CITÉ HEUR  
GOURGUI 75C - 2ÈME  
ÉTAGE B. P. 6701 DAKAR  
| SÉNÉGAL  
+221 338 644 408  
(CHAMADA PARA A  
REDE FIXA DO  
SENEGAL)  
westafrica@nrv-  
norvia.com

**PONTA DELGADA**

RUA ARCANJO LAR 9  
R/C 9500-162 PONTA  
DELGADA | PORTUGAL  
+351 296 287 031  
(CHAMADA PARA A  
REDE FIXA NACIONAL)  
geral@msw-  
consultores.pt